



MONTHLY

A look into current and up-and-coming projects



Team Member Spotlight

Lily Wong Member since: Early Spring of 2019

What motivated you to join IDEA Lab?

Dr. Lillian Hung has been doing so many different projects, all of which are intriguing to me. Every project of the lab has its unique benefits, and I have learned a lot. Also, I like your lab putting into real action to improve the life quality of seniors with cognitive impairment. I think it is only action that could make a difference.

How would you describe the environment at the lab?

I found all of you are very supportive and encouraging. I could do as much as I want, or as little as I want. You did not push me or being demanding. For example, in the project of Whatmatters App, Dr. Lillian Hung invited me to join. I worried that I do not know much about technologies. She replied me that "That is exactly what we want-after all, not every user of our app is very technical." I joined the project happily and have it completed with the team.

What is your message for people wanting to work or volunteer in the Lab, or people living with dementia?

Do not look down on people with dementia and assume that they are unable to do anything. I once brought the patients for an outing at Granville Island, and you would not believe this-they knew exactly what they want and which store to purchase from. Also, people with dementia are still able to contribute to society. A female that I know could sew and mend clothes. Another one can French braid for a girl attending for a high school graduation ceremony. The hairstyle was really fancy and the teenage girl looked very pretty. I am sure such people have done a lot more for their grandchildren and other families, but just have not shared with us.

Newsletter Team:

Lily Ren, Haniya Bharucha and Katrina Jang

IN THIS ISSUE

**TEAM MEMBER
SPOTLIGHT**

SMART TV

VIRTUAL REALITY

**OVERCOMING
LONELINESS IN LONG
TERM CARE**

DEMSCOPE

**ROBOT USE IN LONG
TERM CARE**

TELEPRESENCE ROBOT

Smart TV

Karen Wong

We are collaborating with the Zinnia TV team to produce more videos for culturally and linguistically diverse populations with dementia.

We have just started the second phase of the TV project. Staff in long-term care and geriatric sites will implement the videos for residents/patients. We will collect feedback from staff on their experience with implementation.



'Drink water' is the first video for Zinnia TV's Activities of Daily Living series



A screenshot of a video encouraging audience to drink water in Cantonese by our family partner Lily Wong



Another snapshot of a dog sipping on water - taken from Zinnia tv



Virtual Reality

Winnie Kan

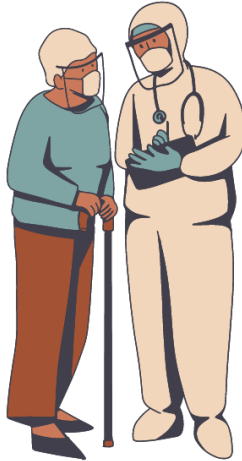
The VR team has started to conduct staff focus groups at one of the LTC sites. We are also currently working on data extraction for the VR scoping review. This upcoming month, we are looking forward to continue hosting engagement sessions and learning more about staff thoughts and insights through focus groups.

An occupational therapist is assisting a resident with putting on a VR headset to experience an immersive video playing with puppies!

Overcoming Loneliness in Long Term Care

Chelsea Smith

We are currently in the writing phase of the project to ensure our results are communicated internationally. Our methods paper focused on using the de Jong Gierveld Loneliness Scale (shown below) with older adults living in long-term care was recently accepted for publication! Huge congrats to the team and much appreciation for Karen taking the lead on this paper. We are also revising a second paper for publication focused on understanding the experience of loneliness among residents living in long-term care during the COVID-19 pandemic and recommending ways to mitigate this loneliness.



		None of the time	Rarely	Some of the time	Often	All of the time
1	There is always someone I can talk to about my day-to-day problems					
2	I miss having a really close friend					
3	I experience a general sense of emptiness					
4	There are plenty of people I can lean on when I have problems					
5	I miss the pleasure of the company of others					
6	I find my circle of friends and acquaintances too limited					
7	There are many people I can trust completely					
8	There are enough people I feel close to					
9	I miss having people around me					
10	I often feel rejected					
11	I can call on my friends whenever I need them					

Our team has also been accepted to present three abstracts at the upcoming Alzheimer’s Association International Conference in San Diego! We will present posters about resident loneliness, staff loneliness, and recommendations for using the de Jong Gierveld Loneliness Scale with older adults living in long-term care. We are excited to continue sharing our findings with other research groups, stakeholders and long-term care staff, policy-makers, and the public!

Feel free to contact me (chelsea.smith4@mail.mcgill.ca) for any questions about this project.



DemScape

Joey Wong

We have started data collection! Our three RA teams have been working in different areas in the city with the participants to explore their regular outdoor activities and walking destinations. Participants were engaged and shared their walking routines in the neighbourhood. Some of our participants have already tried out the cap with a mounted GoPro. We appreciate them for agreeing to wear the cap during the coming walk-along interview to capture footage from their points of view. This will be helpful in our data analysis process. We enjoyed the interviews. Stay tuned for more updates on our walk-along interviews!



Joey from UBC (on the left) and Madison from SFU (on the right). Taken after our first successful interview!




Robot Use in Long Term Care

Joey Wong

We recently published a paper exploring technological risks and ethical issues of adopting robots in long-term care (LTC) homes.

Technological risks and ethical implications of using robots in long-term care

Lillian Hung¹ , Jim Mann², Jennifer Perry³, Annette Berndt² and Joey Wong⁴

Journal of Rehabilitation and Assistive Technologies Engineering
 Volume 9: 1–10
 © The Author(s) 2022
 Article reuse guidelines:
sagepub.com/journals-permissions
 DOI: 10.1177/20556683221106917
journals.sagepub.com/home/jrt


Abstract

Introduction: The pandemic provides a unique opportunity to examine new directions in innovative technological approaches in long-term care (LTC) homes. While robotics could enhance staff capacity to provide care, there are potential technology risks and ethical concerns involved in technology use among older people residing in communal aged care homes. This qualitative descriptive study explores the technological risks and ethical issues associated with the adoption of robots in the specific context of LTC homes.

Telepresence Robot

Nazia Ahmed

We interviewed three residents about their experience of using the Robot. We have conducted discussion with four focus groups with staff champions to ensure their opinions are heard and responded to positively.

We celebrated Father's Day at long-term care (LTC) homes with residents living with various cognitive and physical disabilities.



Our robot "Kirby" is Archie's friend!



Peter's wife helped him to remember Father's Day with IDEA Lab!

The interaction of residents with their families via the robot has impacted on each resident differently. With the robot, one of the residents feels more connected to his families, and there is a noticeable change in his behaviour. The robot also helped him with mood swings and reduced injuries due to multiple falls.

-A Staff Champion from the LTC in Our Focus Group

