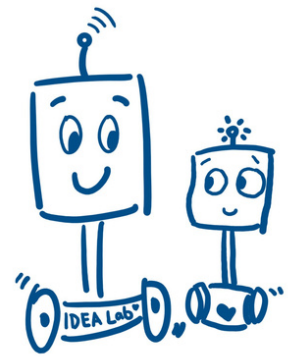


# Using Telepresence Robots to Enable Research in Long-Term Care led by Patient Partners



**Presenters:** Lake, Charlie; Mann, Jim, UBC IDEALab, University of British Columbia

**Authors:** Hung, Lillian; Lake, Charlie; Wong, Joey; Hussein, Ali; Mann, Jim, UBC IDEALab, University of British Columbia

## Background

Researchers in the field of long-term care need to find innovative ways to engage patient and family partners. The patient and family partners with our study provided a skillset and experience that was key to our project.

By using telepresence robots, we hoped to:

- give users **a sense of presence** in a remote space
- **create a safe environment** for people living with dementia to participate in research
- **enable active involvement** in research remotely despite ongoing visitation restrictions due to the COVID-19 pandemic

## Methods

We used the telepresence robots for one-on-one interviews and workshops led by patient and family partners in **3** separate projects across **4** LTC homes. We then interviewed all **10** researchers (including patient and family partners), to better understand the robots' effectiveness and any existing barriers.



## What did researchers think?

### Benefits



Research Enabler



User-Friendly Technology



Increased Engagement

### Challenges



Lack of Infrastructure and Resources



Training and technical obstacles

## Our recommendations to implement: ROBOT

- R**ealign to adapt methods
- O**rganize with site champions
- B**lend Strategies
- O**ffer timely technical assistance
- T**ailor training to site/user needs



THE UNIVERSITY OF BRITISH COLUMBIA

